



Darganfod Hen Dai Cymreig Discovering Old Welsh Houses

Reports: Welcome to the many Discovering Old Welsh Houses Reports which are available here on our website. All the reports - House Histories, Building Reports and Tree-ring Dating reports - can be accessed - [here](#)

Discovering Old Welsh Houses studies and celebrates the traditional houses of North Wales and the lives of the people who lived in them.

The copyright of most of these reports belongs to Discovering Old Welsh Houses. Where copyright resides with others, we have made every effort to obtain their permission to reproduce reports on our site. Our policy is to allow free access to our research documents as part of the public benefit we provide as a registered charity. You are welcome to reproduce this material but if you do so, please acknowledge the source

If you find the content useful, please consider becoming a [Member](#) to access the many benefits available.



Please note that these reports are being updated as part of an ongoing programme of revision. Older reports sometimes refer to the old names of the Group. Between 2005 and 2012 also known as The Snowdonia Dendrochronology Project, then the N W Wales Dendrochronology Project and then the Dating Old Welsh Houses Group.

New reports will be added from time to time. Keep an eye on our website for updates.



©Discovering Old Welsh Houses Group

Rhif Elusen Gofrestredig: No: 1131782: Registered charity

www.discoveringoldwelshhouses.co.uk

North West Wales Dendrochronology Project

Penhyddgan, Boduan (Gwynedd)



Adam Voelcker MA (Cantab) Dip Arch RIBA AABC IHBC
Pant Glas Uchaf, Pant Glas, Garmdolbenmaen, Gwynedd LL51 9DQ

c 2012

North West Wales Dendrochronology Project

Penhyddgan, Boduan (Gwynedd)

Introduction

This report contains the results of a survey undertaken to complement the proposed dating of timbers at Penhyddgan, Boduan, as part of the North West Wales Dendrochronology Project. The survey was undertaken on 10 March 2010 by Adam Voelcker. Documentary research will be undertaken by volunteers to accompany this survey, and separate reports will be issued describing the results of the documentary survey and of the dendrochronology sampling.

Site particulars

Site address

Penhyddgan, Boduan, Pwllheli, Gwynedd LL53 8YH

NGR

SH 23024 33867

NPRN

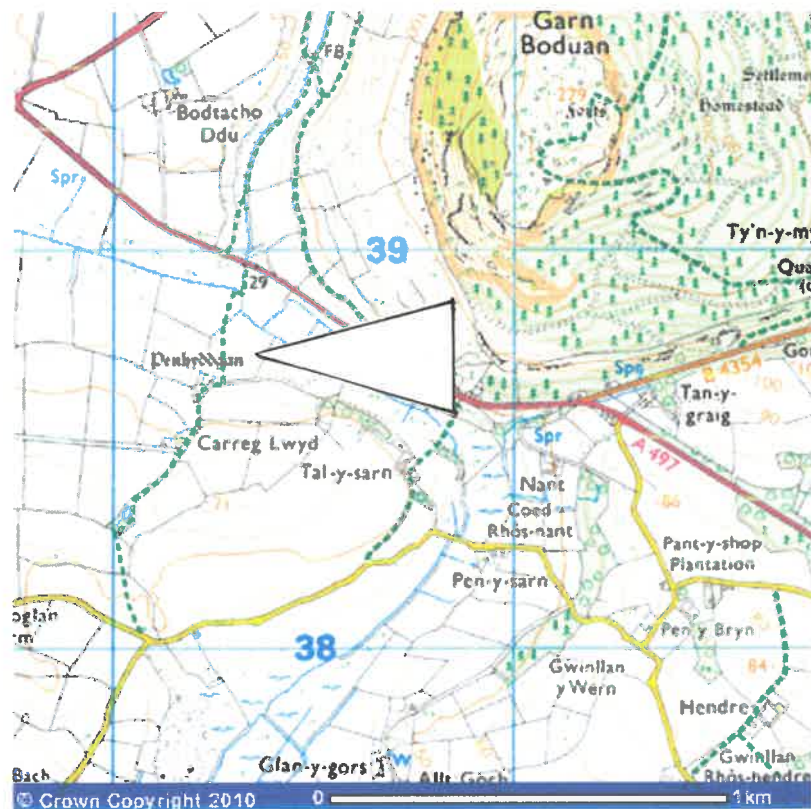
16673

Listing status

Grade II*

Methodology

The attic plan, cross-section, truss elevations and details were measured and photographed on site, and the drawings drawn freehand from the photos and measurements.



References

Cadw listing description

Record No. 4269

(see Appendix)

RCAHMW Caernarvonshire Inventory

Vol.III (West). Entry no.1553 (pp 30-31) (inspected 1956)

(see Appendix)

Sources of information at the NMRW, Aberystwyth

- letter from Margaret Thompson (Catalogue No. C4545)
- sketch plan (C4546)
- RCAHMW sketch of screen (C11738)
- RCAHMW drawing, Fig.38 in Inventory (C11739)
- RCAHMW plan of house, Fig.58 in Inventory (C11740)
- plan and elevation (not RCAHMW) (C11741)
- sales particulars, 1987 (C432769)

Houses of the Welsh Countryside (Peter Smith)

included on maps

- map 27 (Regional house type A)

The Buildings of Wales: Gwynedd (Haslam, Orbach & Voelcker)

pp.271-2

(see Appendix)

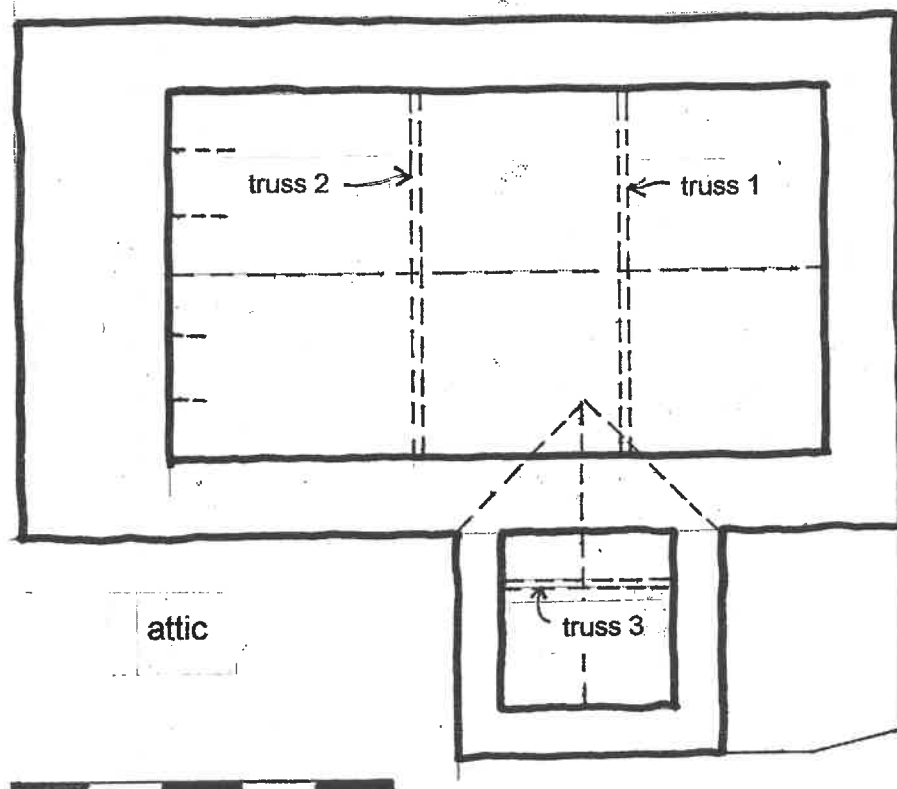
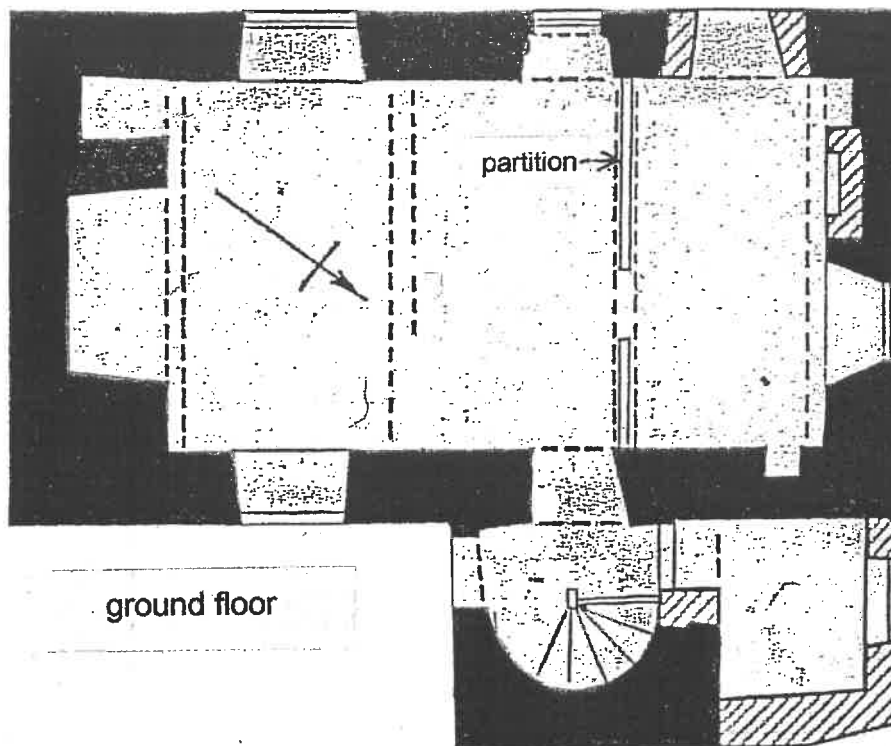
Archaeologia Cambrensis

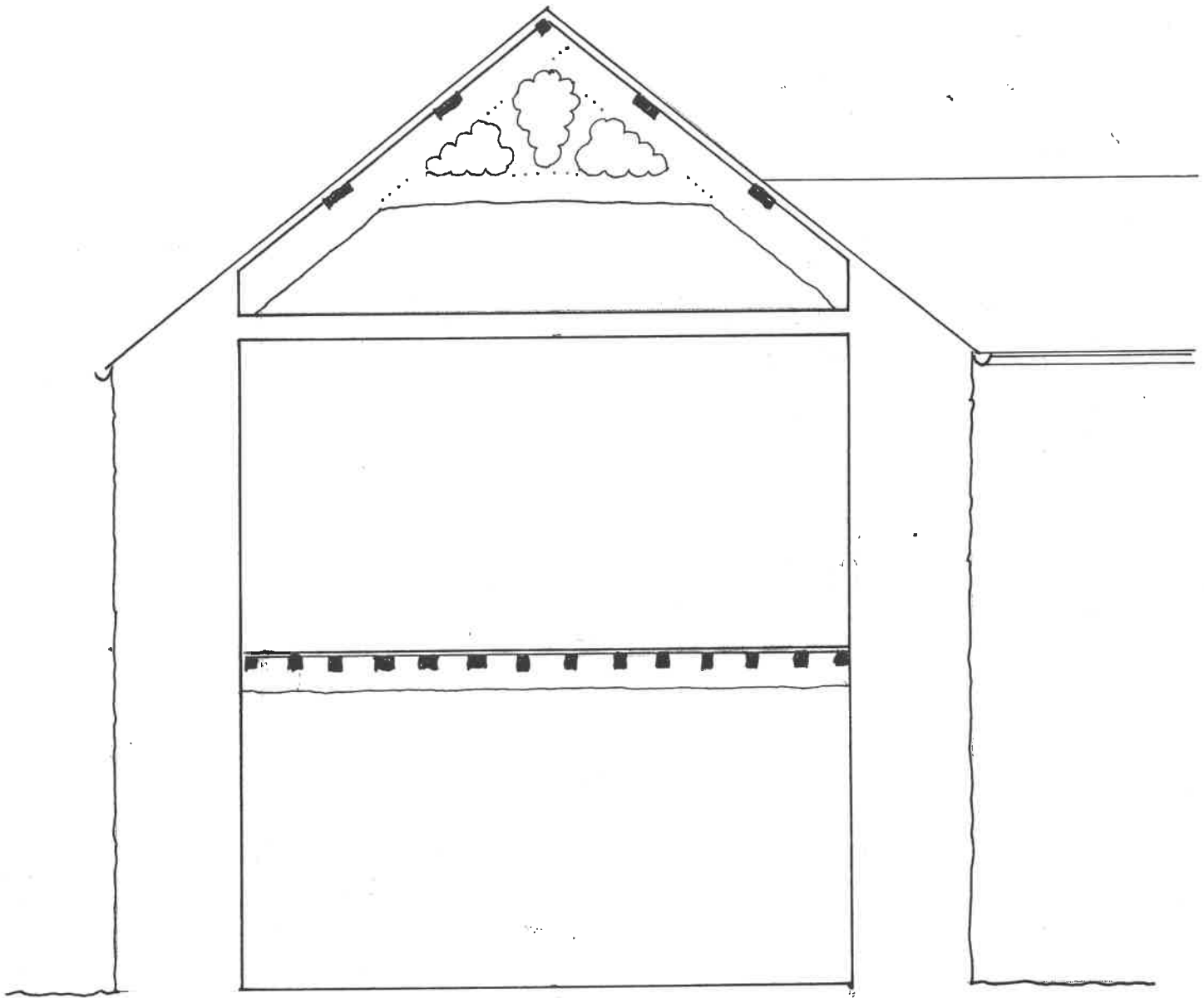
'A Master Carpenter in North Wales: some carved screens and associated inscriptions of the late-sixteenth century'

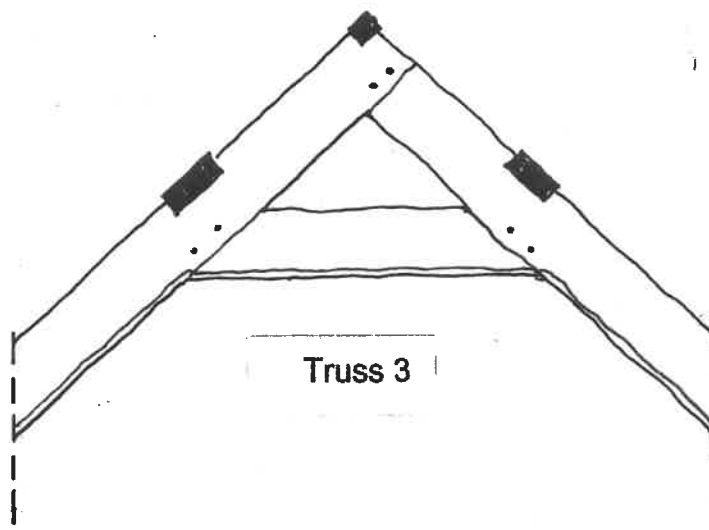
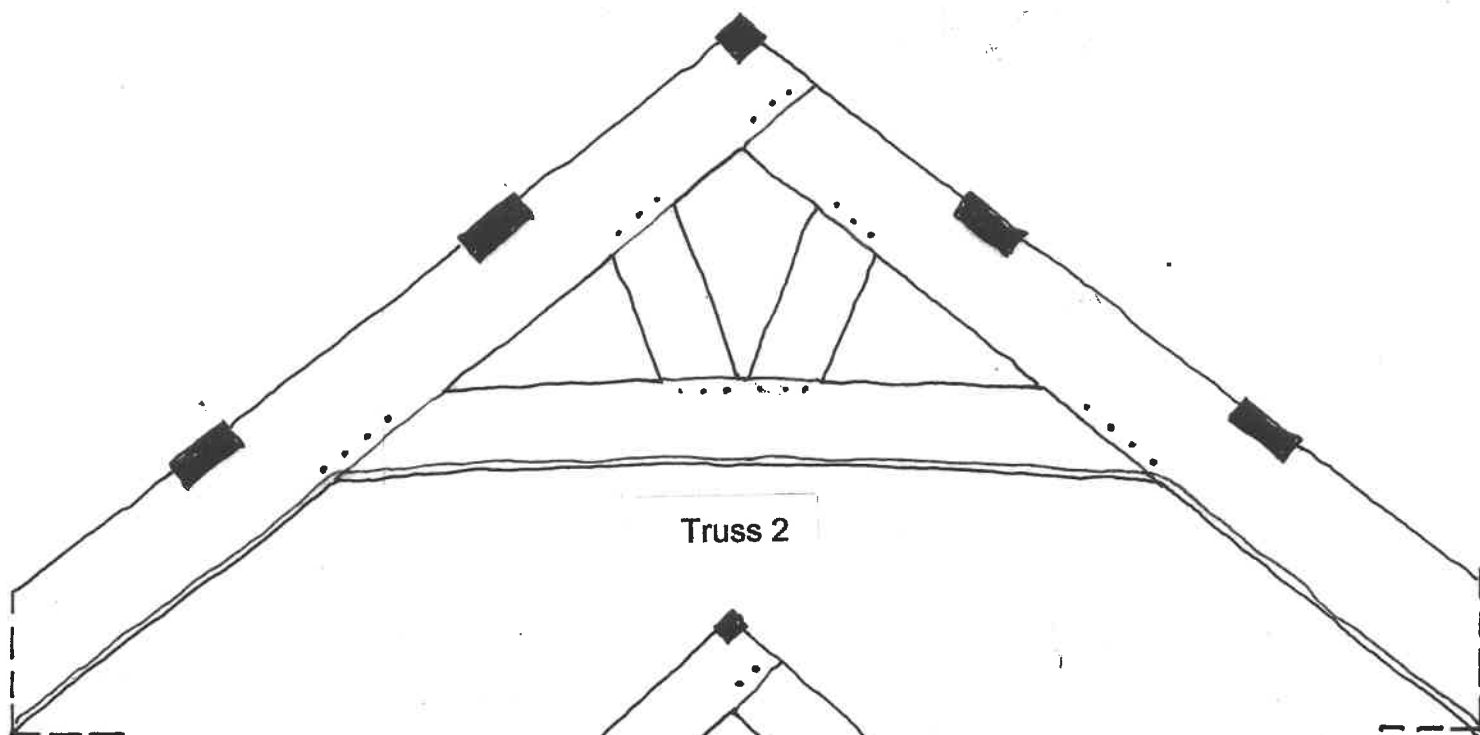
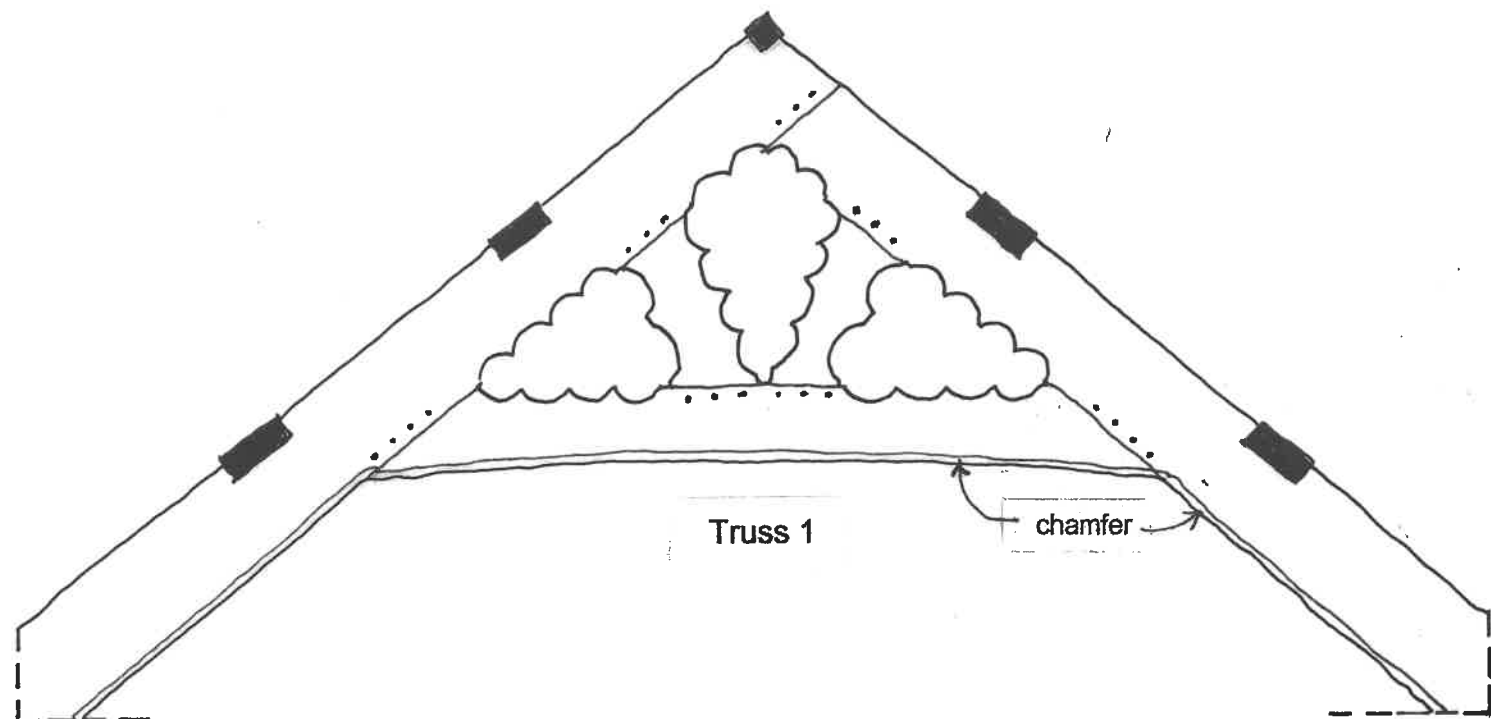
article by A. J. Parkinson in AC1975 (pp 73-101) and AC1976 (pp 169-171)

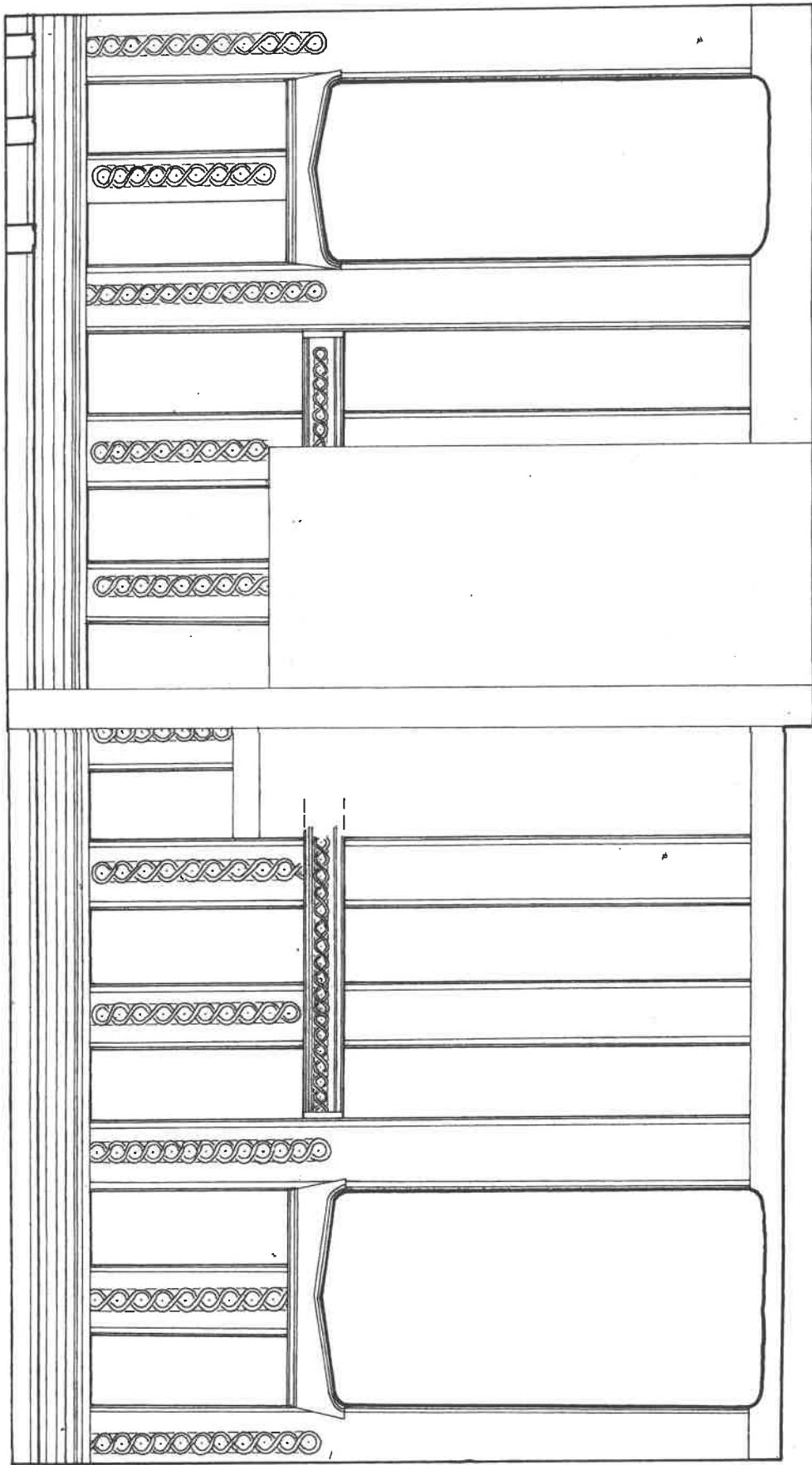
Notes of article, made by AV

Penhyddgan screen uncovered in 1976. Guilloche-moulded, with doors at each end. **W** initial carved, similar to that on a screen at Plasnewydd, Llanfair Talhaearn, Denbighshire. Probably date 1570-98, putting the date of the house back into the C16. Maybe from the workshop of the same carpenter of screens at Plas Iolyn, Pentrefoelas; Rhiwlas, Bala; Caerhun church (in S chapel, above E window, recording the completion of the building in 1591); Pencraig, Betws-y-coed; Plas Mawr, Conwy; and possibly Cyffdy Hall, Llanrwst.



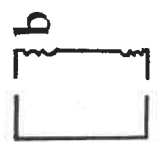
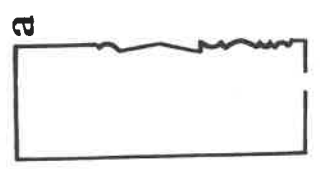






screen 1m

details 30 cm



Penhyddgan, Boduan Elevation and details of partition



Plate 1 South-west elevation



Plate 2 Screen doorway



Plate 3 Screen detail



Plate 4 Doorway detail



Plate 5 Truss 3 (porch roof)



Plate 6 Truss 1



Plate 7 Truss 2

(1553) PENHYDDGAN (Fig. 58, Plate 46) is a house of two storeys dating from the early 17th century. The walls are of roughly coursed boulders with boulder plinth at the gable ends and large quoins squared at the angles. The roof is of small slates, perhaps original. The porch is contemporary with the main part of the house; it contained the stair, which has been replaced by a modern one of wood. A small single-storey addition, probably 18th-century or earlier, occupies the re-entrant angle to the N.

Both the doorway to the porch and a doorway on the S.W. front (altered into a window) have rounded heads. The windows are for the most part of horizontal proportion or square; one to the N. of the altered S.W. doorway has been made into a doorway. The N.E. wing is lighted by a square window high in the gable and by a narrow light over the entrance. The square squat chimney on each main gable has a moulded course, above which rises a tall brick stack with capping.

The ground floor is ceiled in three bays, two to the main room, the other formerly a room separated by a partition pegged into the beam; all present subdivisions are modern. No chamfers or stops of the main beams are now visible, but the joists, mostly original though disturbed, are moulded only on the soffits. The wide fireplace at the S.E. has a chamfered and moulded bressummer with indented soffit.

The first floor may formerly have been open to the roof which is said to have carved timbers but is inaccessible. The fireplace at the S.E. is now blocked; the recess on each side of the chimney projection has a small light.

In the adjoining yard is a circular stone-lined well.

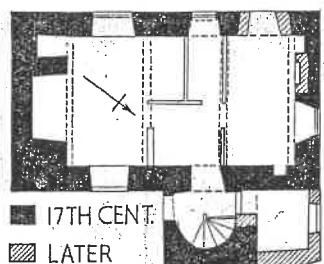
Condition: good.

SH.30243867

18 x 56

32 S.W.

PENHYDDGAN



10 0 10 20 FT.
5 0 5 M.

CEIDIO 1553

FIG. 58



PENHYDDGAN, 1½ m. WNW. Late C16 house of two storeys and three bays, with a gabled stair wing projecting on the NE. Access originally from the SW, the main doorway with rough voussoirs to the head. Later, access moved to the opposite (NE) side (perhaps as a result of the road improvements), and the stair wing became a front porch. Rounded walls contain the wooden spiral staircase, probably a replacement, and a tiny loft, with gable window and mini-truss. Large fireplace in the main room, with recesses on both sides. Central beam and fluted joists. A fine oak partition divides this room from two former service rooms to the NW. Low four-centred doorways to each (one now blocked), and guilloche mouldings to the uprights. Two roof trusses, the one in line with the screen finely cusped, indicating that it was to be seen from the main chamber. Recesses each side of the SE fireplace, each with a tiny window, so probably closets. OUTBUILDINGS to the S, one with a slate plaque: T. P. Jones Esq. 1790 (i.e. Thomas Parry Jones of Madryn, one of the chief promoters of the Tremadog to Porth Dinllaen turnpike).

Authority	Gwynedd	Record No	4269
		Date Listed	19/10/1971
Community	Buan	Date Amended	12/04/1999
Locality	Ceidio	Grid Ref	230240 338670
Postcode	LL53 8YH	Grade	II*
Name	Penhyddgan		
Formerly Listed As	Penrhyddgan		

Location

Situated some 2 km E of Ceidio church and approached by drive running SW from the A497 NW of Boduan.

History

Sub-medieval farmhouse thought to date from the later C16 (perhaps c1580). The house formed part of the Madryn estate by 1783. C20 extension, but the house has otherwise survived little changed.

Exterior

Farmhouse. 2 storeys, 2-unit plan with projecting staircase wing. Down-slope siting, with principal room at upper end. Granite rubble walls (pebble-dash on gable end), slate roofs and gable-end stacks, rendered bases with the brick shafts rebuilt c1990. Lean-to C20 addition against lower end. East elevation has staircase wing set to right, with single 9-paned window in gable apex, and entrance in its S return in roughly segmental arched doorway with C20 oak panelled door. Tripartite sash window lighting principal room to left, and 16-pane sash to first floor above. C20 lean-to abuts the staircase wing on its right side, and wraps around the lower gable of the house, in part at least possibly replacing an earlier (perhaps C18) addition. West elevation has inserted small-paned door towards left (presumably marking the site of an earlier window), and rough-arched doorway partially blocked and now a window to left of centre (aligned with the east entrance in the stair wing). Tripartite sash window to the right. Small former stair light to right at first floor, and 6- and 9-pane sashes aligned with lower right hand window and original doorway. Upper left window is unaligned, a wide small-paned casement. Present entrance in C20 lean-to against lower gable.

Interior

Simple 2-roomed plan comprising main hall formerly with opposed entrances, and parlour, the two separated by a fine screen with 4-centred arched doorways to each side (one now blocked). Screen modified by insertion at some time of two modern doorways, subsequently removed and panelling re-instated. Guilloche moulding to original lengths of mid-rail, and reeded mouldings to lintels and upper rails, echoed in similar moulding to the fire-lintel, and the joists (though many have been turned). Heavy chamfered main beams. Deep fireplace flanked by closet to left, and possible site of stair (since removed) to right. Some similar decoration to joists in former parlour. Position, though not detail, of parlour fireplace, has been retained. Renewed spiral stair in projecting wing, which continues slightly beyond the first floor level. C20 door into hall, and older door now giving access to C20 extension, but presumably formerly serving an earlier addition to the house. Layout of first floor now altered by later sub-division. Curved bases of roof trusses visible below ceilings. Room over hall formerly open to the roof, evidenced by the fine decoration applied to this truss: ornate cusped bracing to collar, raking struts and principal rafters. The second truss is of similar form, but is undecorated. Large-scantling through-purlins laid flat on trusses.

Listed

Listed Grade II* as an exceptionally complete late C16 farmhouse of high status, with particularly good surviving interior features.

Reference

Listings Schedule

12