



Darganfod Hen Dai Cymreig

Discovering Old Welsh Houses

Reports: Welcome to the many Discovering Old Welsh Houses Reports which are available here on our website. All the reports - House Histories, Building Reports and Tree-ring Dating reports - can be accessed - [here](#)

Discovering Old Welsh Houses studies and celebrates the traditional houses of North Wales and the lives of the people who lived in them.

The copyright of most of these reports belongs to Discovering Old Welsh Houses. Where copyright resides with others, we have made every effort to obtain their permission to reproduce reports on our site. Our policy is to allow free access to our research documents as part of the public benefit we provide as a registered charity. You are welcome to reproduce this material but if you do so, please acknowledge the source

If you find the content useful, please consider becoming a [Member](#) to access the many benefits available.



Please note that these reports are being updated as part of an ongoing programme of revision. Older reports sometimes refer to the old names of the Group. Between 2005 and 2012 also known as The Snowdonia Dendrochronology Project, then the N W Wales Dendrochronology Project and then the Dating Old Welsh Houses Group.

New reports will be added from time to time. Keep an eye on our website for updates.



©Discovering Old Welsh Houses Group

Rhif Elusen Gofrestredig: No: 1131782: Registered charity

www.discoveringoldwelshhouses.co.uk

North West Wales Dendrochronology Project
DATING OLD WELSH HOUSES

Tŷ Mawr, Criccieth, Gwynedd

ARCHITECTURAL RECORD



in partnership with



Adam Voelcker
MA (Cantab) Dip Arch
Pant Glas Uchaf
Pant Glas
Garndolbenmaen
Gwynedd LL51 9DQ

North West Wales Dendrochronology Project

Tŷ Mawr, Criccieth (Gwynedd)

Introduction

This report contains the results of a survey undertaken to complement the proposed dating of timbers at Tŷ Mawr, Castle Street, Criccieth, as part of the North West Wales Dendrochronology Project. The survey was undertaken on 22 February 2010 by Adam Voelcker. Documentary research will be undertaken by volunteers to accompany this survey, and separate reports will be issued describing the results of the documentary survey and of the dendrochronology sampling.

Site particulars

Site address

Tŷ Mawr, Castle Street, Criccieth, Gwynedd LL52 0DP

NGR

SH 25004 33785

NPRN

16621

Listing status

Grade II

Methodology

The cross-sections have been drawn by hand and are based on approximate site measurements and photographs taken on site during the inspection.

References

Cadw listing description

Record No. 15349

(see Appendix)

RCAHMW Caernarvonshire Inventory

Vol.II (Central). Entry no. 873 (p.62) (inspected 1955)

(see Appendix)

Sources of information at the NMRW, Aberystwyth

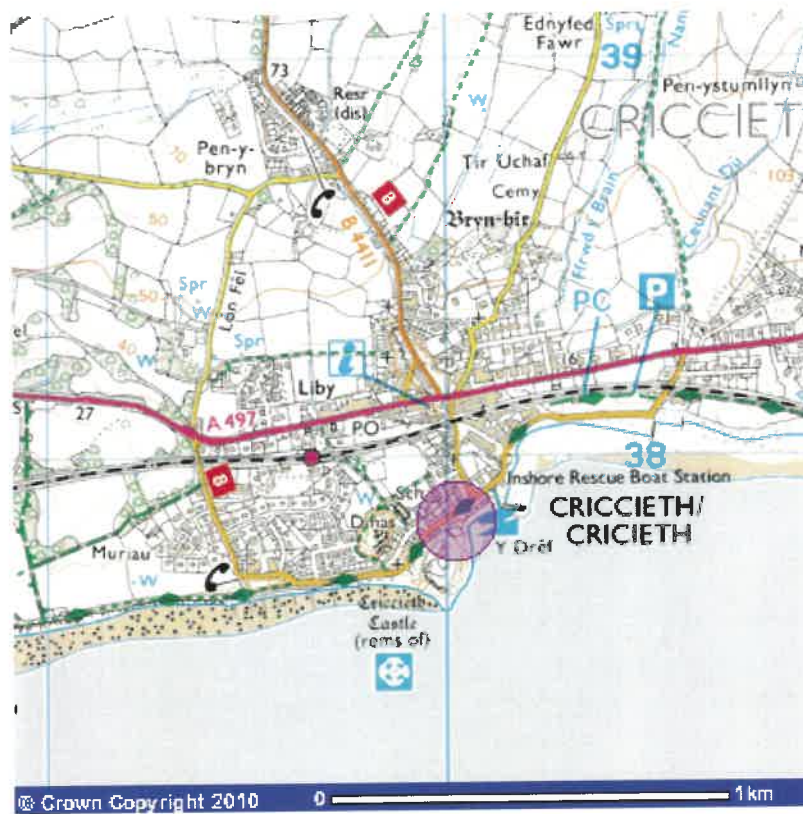
Houses of the Welsh Countryside (Peter Smith)

included on maps

- 19 (windbraces)
- 20 (cusping in roof trusses)
- 27 (Regional house type A)
- 37 (post and panel partition)
- 43 (ornate open roof)

The Buildings of Wales: Gwynedd (Haslam, Orbach & Voelcker)

p. 352 (passing mention only)



Besides the stratified objects already mentioned, other small finds dating from the 13th- and 14th-century occupation, but largely unstratified, include: a silver coin of the Chapter of Cambrai (1296-1300); objects of bronze and iron such as harness fittings, keys, tools and numerous iron arrow-heads (mostly from the filling of the Leyburn and Cistern towers); a lead ingot with heraldic stamps; rotary stone querns, and architectural mouldings in grit and sandstone.²⁰ They are in the National Museum of Wales at Cardiff.

¹ See the historical, architectural and archaeological account by the then Inspector of Ancient Monuments for Wales, the late B.H. St. J. O'Neil, 'Cricieth Castle, Caernarvonshire', *Arch. Camb.*, 1944, pp. 1-51; for comparable castles, see pp. 13, 17, 19. The castle was previously measured and described by Harold Hughes, see *Arch. Camb.*, 1905, pp. 200-10.

² *Bru y Tywysogyon*, Rolls Series, p. 327; ed. Thomas Jones, Cardiff, 1952, p. 103; 1955, pp. 235-7. *Myv. Arch.* p. 266 (Ode of Einion ap Madog). *Hist. Wales*, p. 693. Whether it could have been the manor called Crokein where William de Braose was executed by Llywelyn the Great in 1230 is doubtful, although a similar spelling is often used for Cricieth in English royal documents of the late 13th and early 14th centuries, *Cal. Anc. Corr.*, p. 37; *Hist. Wales*, p. 671; O'Neil, p. 2.

³ *Annales Cambriae*, p. 97.

⁴ *Cal. Anc. Corr.*, pp. 92-3.

⁵ Building accounts of 1282-92 quoted by J. G. Edwards, "Edward I's castle-building in Wales" (*Proc. Brit. Acad.*, XXXII), pp. 20, 62; O'Neil, pp. 4-5; text of Pipe Roll in *B.B.C.S.*, XIV, pp. 238-9, 305, 310. Also chamberlain's account, P.R.O.E. 101/486/9, approach road improved, hall, etc. repaired in 1296 (*ex inf.* A. J. Taylor); Pipe Roll in *B.B.C.S.*, XV, p. 133, repair and improvement of buildings, 'domorum', in 1296-1301; *Min. Acct.* 1211/2, *ibid.*, I, p. 269, small works in 1304-5.

⁶ Accounts printed by O'Neil, p. 48, Append. III, IV.

⁷ Printed by the same, p. 49, Append. VI.

⁸ Accounts in O'Neil, Append. VIII, IX; also P.R.O. *Min. Accts.* 1215/1 of 12-13 Ric. II, 1215/2 of 13 Ric. II, the former including *pontium* (? gangway).

⁹ O'Neil, pp. 4, 10. Roll of Garrison *ca.* 1295, in *B.B.C.S.* III, p. 150.

¹⁰ O'Neil, pp. 10-11, correction on p. 258. After Lewis, *Medieval Boroughs*, quoting *Min. Acc.* 1216/7 from Chamberlain of N. Wales on pay claimed by the constable, apparently the last to hold office.

¹¹ O'Neil, pp. 20-1. Mr. E. M. Jope states *in litt.* that in 1939 he discovered medieval pottery beneath the lower bank, so disproving O'Neil's theory that this bank belonged to an Early Iron Age promontory fort.

¹² O'Neil, pp. 12-20.

¹³ Now in the National Museum of Wales at Cardiff, Nos. 38, 558, 38, 635/2.

¹⁴ Ref. n. 5 above.

¹⁵ O'Neil, p. 19. Cf. Conway, No. 183 in *Cuerns. Inv.*, Vol. I; Caernarvon, No. 1104.

¹⁶ O'Neil, p. 9. The rest of this description follows the same order as his, pp. 21-38.

¹⁷ O'Neil, p. 38, Plate VI, 3; p. 44, Plate V, 4 respectively. For a similar enamelled figure, see also London Museum, *Medieval Catalogue*, p. 288, Plate LXXXI, 2.

¹⁸ O'Neil, p. 44 and Fig. 6.

¹⁹ O'Neil, pp. 43-6, Figs. 6-8.

²⁰ O'Neil, list on pp. 38-46 with Figs., also Plates VI, VIII-X.

Condition: in guardianship of the Ministry of Works.

SH 49953765

1938-55

34 S.W.

SECULAR BUILDINGS

(873) TY-MAWR, No. 12 Castle Street, formerly the 'Castle Inn' (Fig. 52, Plates 61, 67),¹ two-storeyed house with cellars, built of igneous rock and slate rubble, the roof covered with

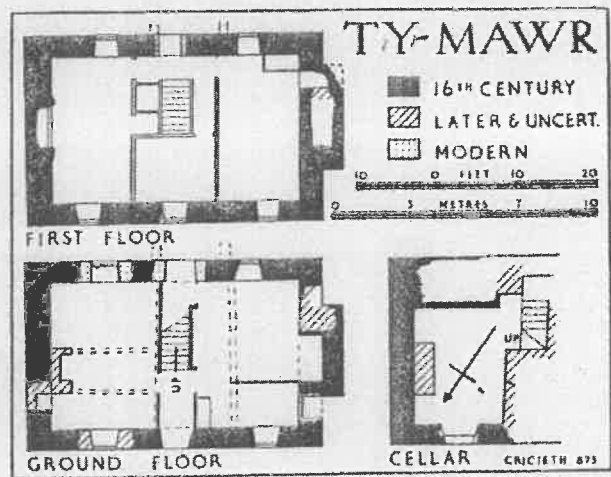


FIG. 52

modern slates. The house dates probably from the second half of the 16th century, having always had a large and a small room on both floors, placed alternately. The only major structural alteration, the insertion of a fireplace in the smaller ground-floor room, took place probably in the 18th century, causing the partial blocking of the original gable-end window and the insertion of a compensatory one in the front wall, its sill cutting the voussoirs of the external doorway to the cellar. At the same time perhaps the ground floor was lowered slightly, and the stone stair to the S. of the W. fireplace was removed and replaced by the present central staircase to the first floor.

The windows of the main, N. front have 19th-century sashes in openings mostly altered in the previous century. The front doorway (Plate 67) and that to the cellar partly hidden by the raised road level both have segmental arches formed of rough thin voussoirs. The rear windows have been altered also, and a doorway and porch added. The W. gable is masked by an abutting cottage, which was reached by an inserted doorway, now blocked. At the E. gable the first-floor chimney is corbelled out; the stack is original, square and squat.

On the ground floor only the W. cross beam is original, and the post-and-panel partition has been partly rebuilt. The cellar was formerly entered by the doorway in the front wall which was later adapted as a window and finally blocked; from the inside it is still reached by stone steps from the larger room. It contains not only the base of the inserted E. fireplace but also a large mass of masonry beneath the present wooden staircase. On the first floor the W. room has a mural cupboard at the S.W. with a curved back, marking the position of the old stone stair from the ground floor, the projection of which can be seen externally above the roof of the adjacent cottage though not at ground level. The roof of three bays has been repaired and is now open throughout, although at one time it was partly ceiled. The E. truss is of arch-braced collar-beam type, evidently intended to be free; the W. truss has a plain collar and posts and was wattle-filled. The few wind braces which remain are small with a single cusp, probably not earlier than mid-16th-century.

¹ Or Ty-lawr, as against the old Ty-mawr nearly opposite and a little above, now rebuilt as shops, *ex. inf.* Mr. Gwilym H. Williams of Cricieth; cf. Griffith, *Ped.*, p. 156.

Condition: good.

SH 50043785

ZI viii 55

34 S.W.

Authority	Gwynedd	Record No	15349
		Date Listed	02/08/1949
Community	Criccieth	Date Amended	12/12/1994
Locality		Grid Ref	250050 373870
		Grade	II

Name TY MAWR, FFORDD CASTELL (CASTLE STREET) (SE SIDE)

Exterior

Previously listed as No 2 Castle Street (Old Castle P.H.).

In a continuously built-up terrace, opposite and above the junction with Tanygrisiau Terrace.

History: A late C16 house, with later alterations including insertion of windows at some time in the C18 and remodelling of internal layout to create a central stair hall. At one time in use as a public house.


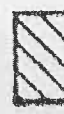

Exterior: Roughly coursed boulder stones and slate rubble, with recent slate roof. End wall stacks, that to left corbelled out at first floor level. 2 storeys, 3 window range, with entrance towards centre. Steep voussoir arched head to doorway, which is flanked by 16-pane sash windows with flat lintels. The 3 upper windows are similar, and align with the lower openings. Cellar opening (formerly a doorway) cut by left hand window, has steep voussoir arched head, similar to that of main doorway.

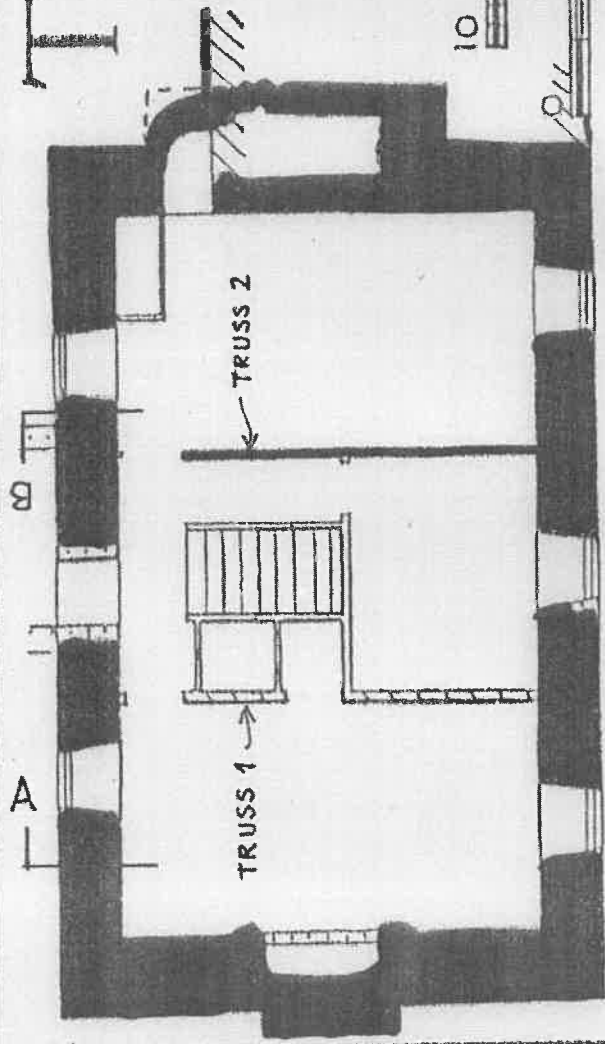
Interior: The house originally had an inside cross-passage plan, and the opposed entrances of this survive, together with the heavy post and panel partition wall, now separating the living room from the stairway. The original layout had a large and a small room on each floor, placed alternatively. The present internal layout is in part the result of later changes, and especially the insertion of a central staircase (perhaps in the late C18). The fireplace in the present living room is probably a C18 insertion, the earlier fireplace in the W room has been blocked, and the original staircase alongside it largely removed. A 3-bay roof with arch-braced collar beam and cusped wind braces to one truss is recorded by RCAHM.

An important example of an early storeyed vernacular building in the centre of the town which has retained many of its original features.

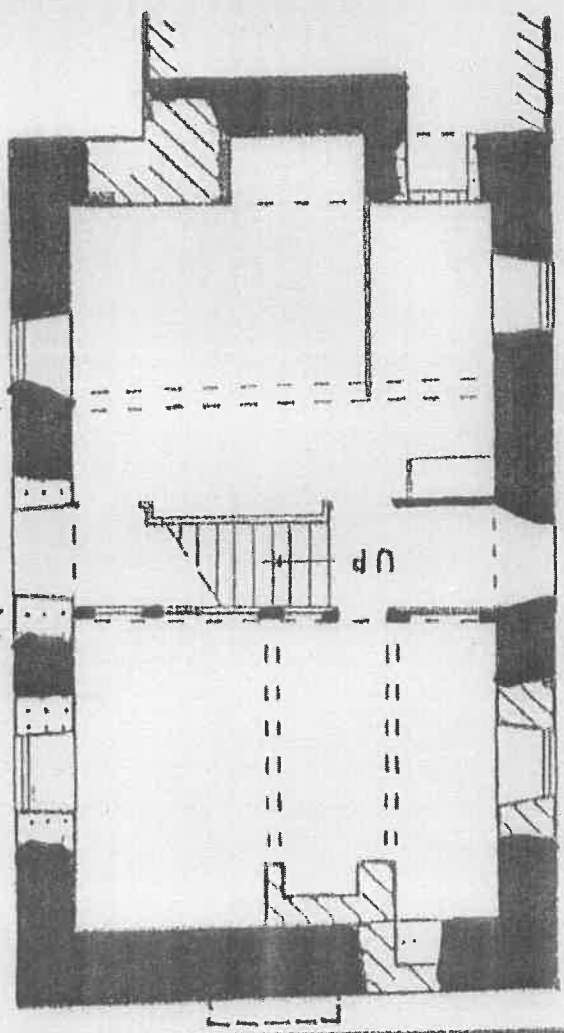
Reference: Royal Commission on Ancient and Historical Monuments in Wales, An Inventory of the Ancient Monuments of Caernarvonshire, Vol II, 1960, P.62;
Peter Smith, Houses of the Welsh Countryside, 1988, pp. 437, 413, 417, 491, 511.

TY-MAWR

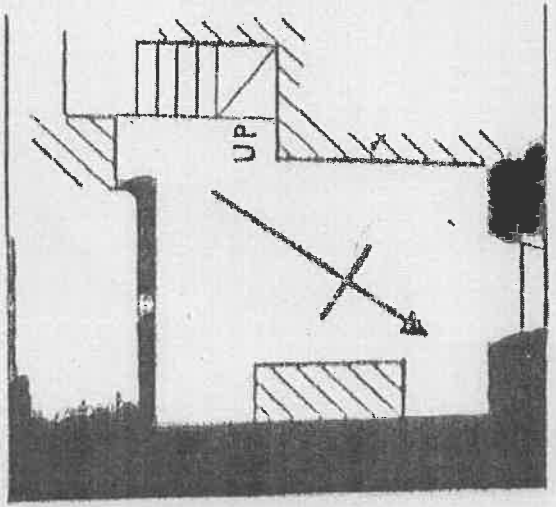
-  16TH. CENTURY
-  LATER & UNCERT.
-  MODERN



FIRST FLOOR

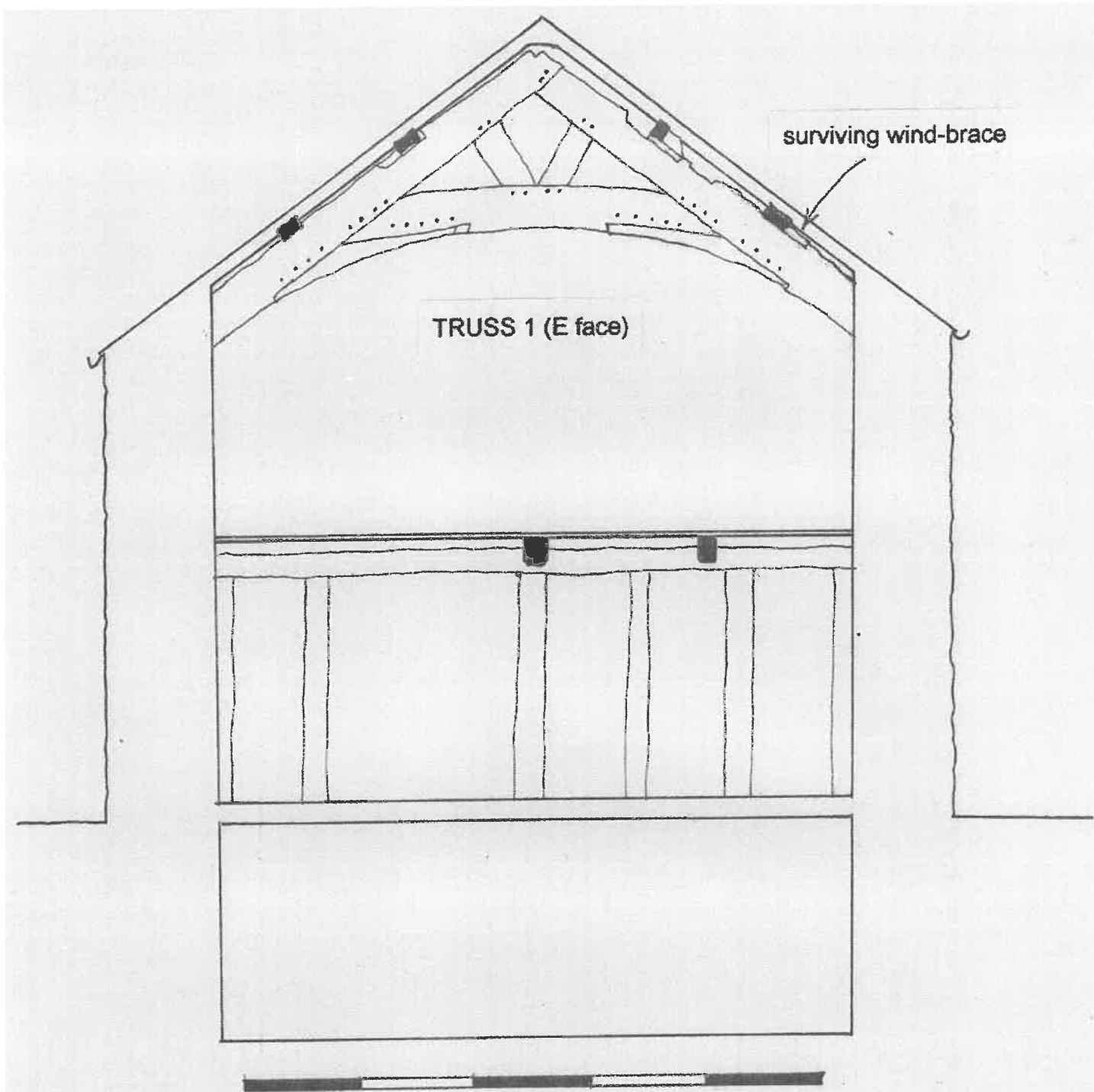


GROUND FLOOR



CELLAR CRICETH 673

FIG. 52



CROSS-SECTION AA
Tŷ Mawr, Criccieth

7

TRUSS 2 (W face)

mortises and cut-outs
for raking wind-braces

holes in underside,
for infill staves

CROSS-SECTION BB
Tŷ Mawr, Criccieth

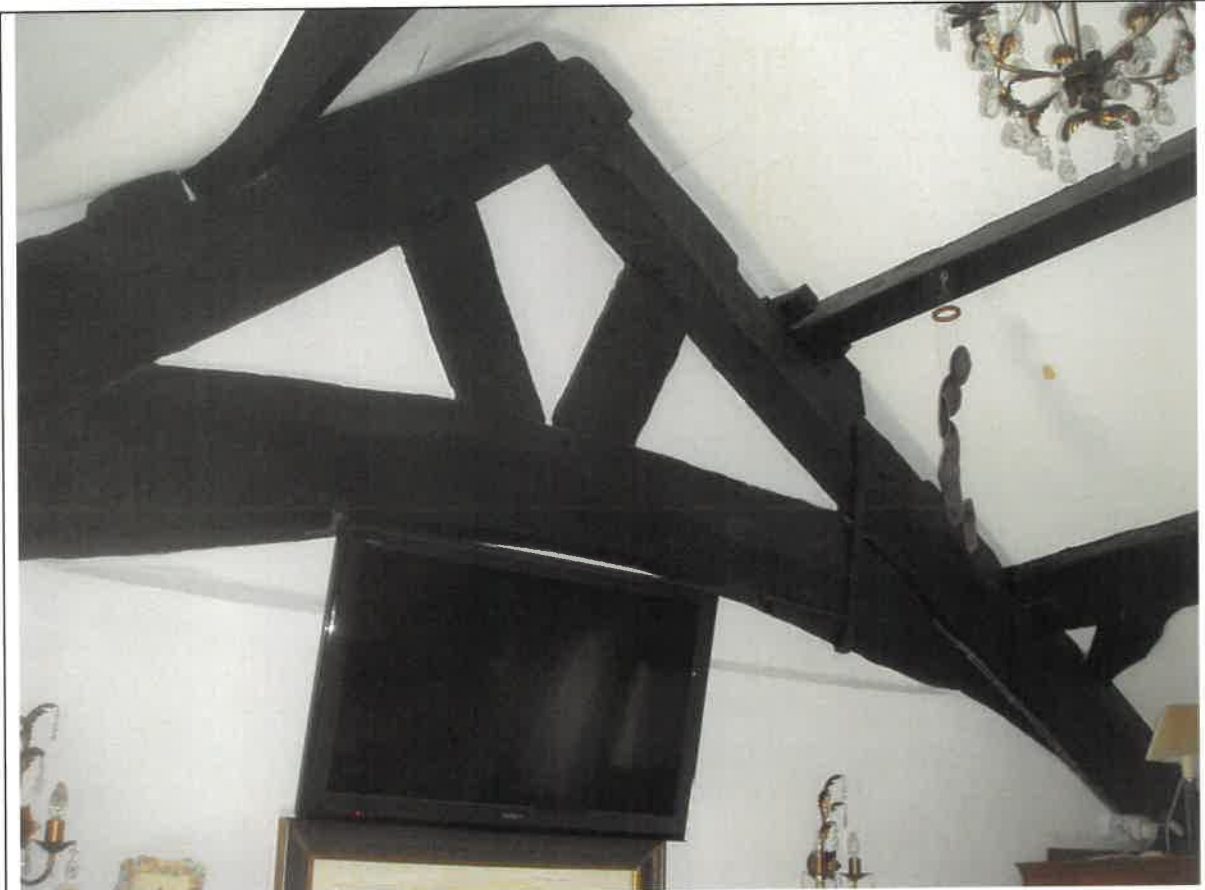


Plate 1 Truss 1 (E face)

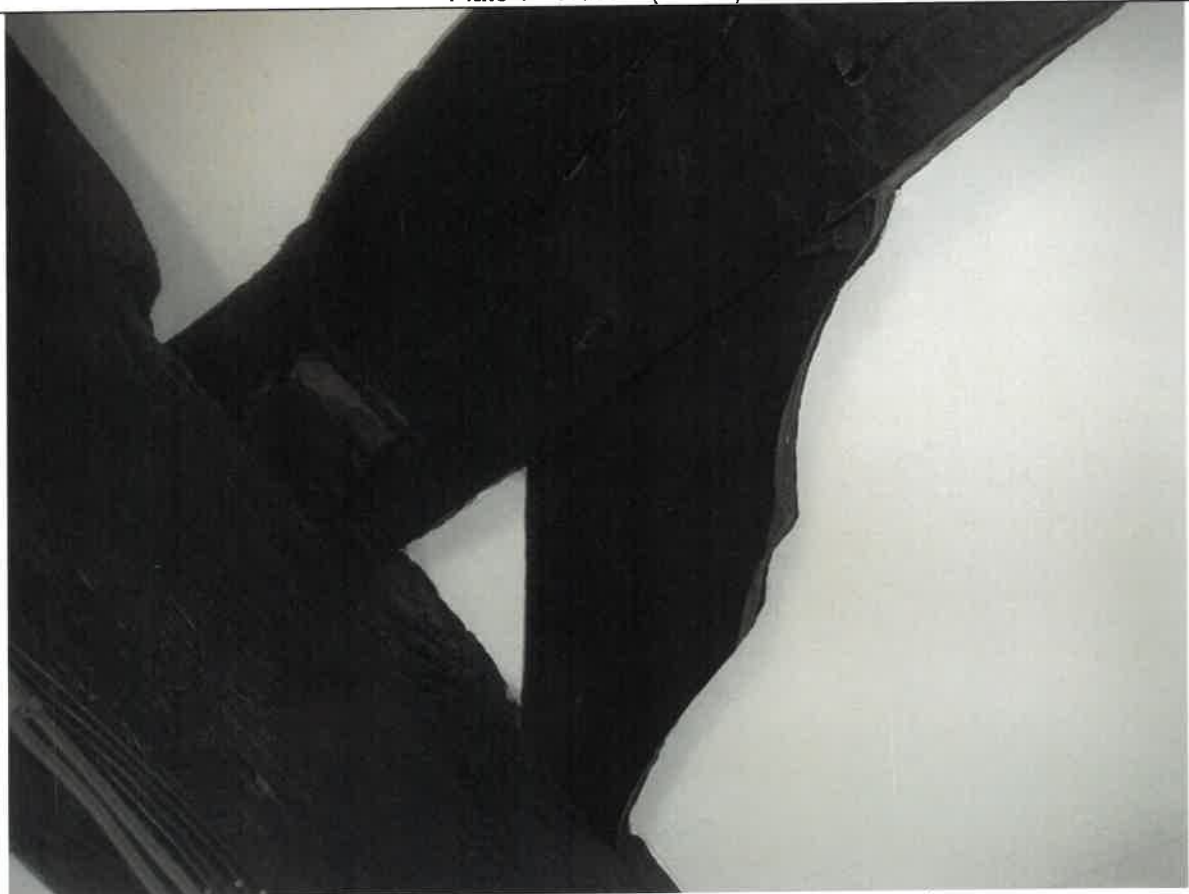


Plate 2 Surviving wind-brace on Truss 1 (E face, N end)



Plate 3 Truss 2 (W face)



Plate 4 Truss 2 (slots and cut-outs for wind-braces)

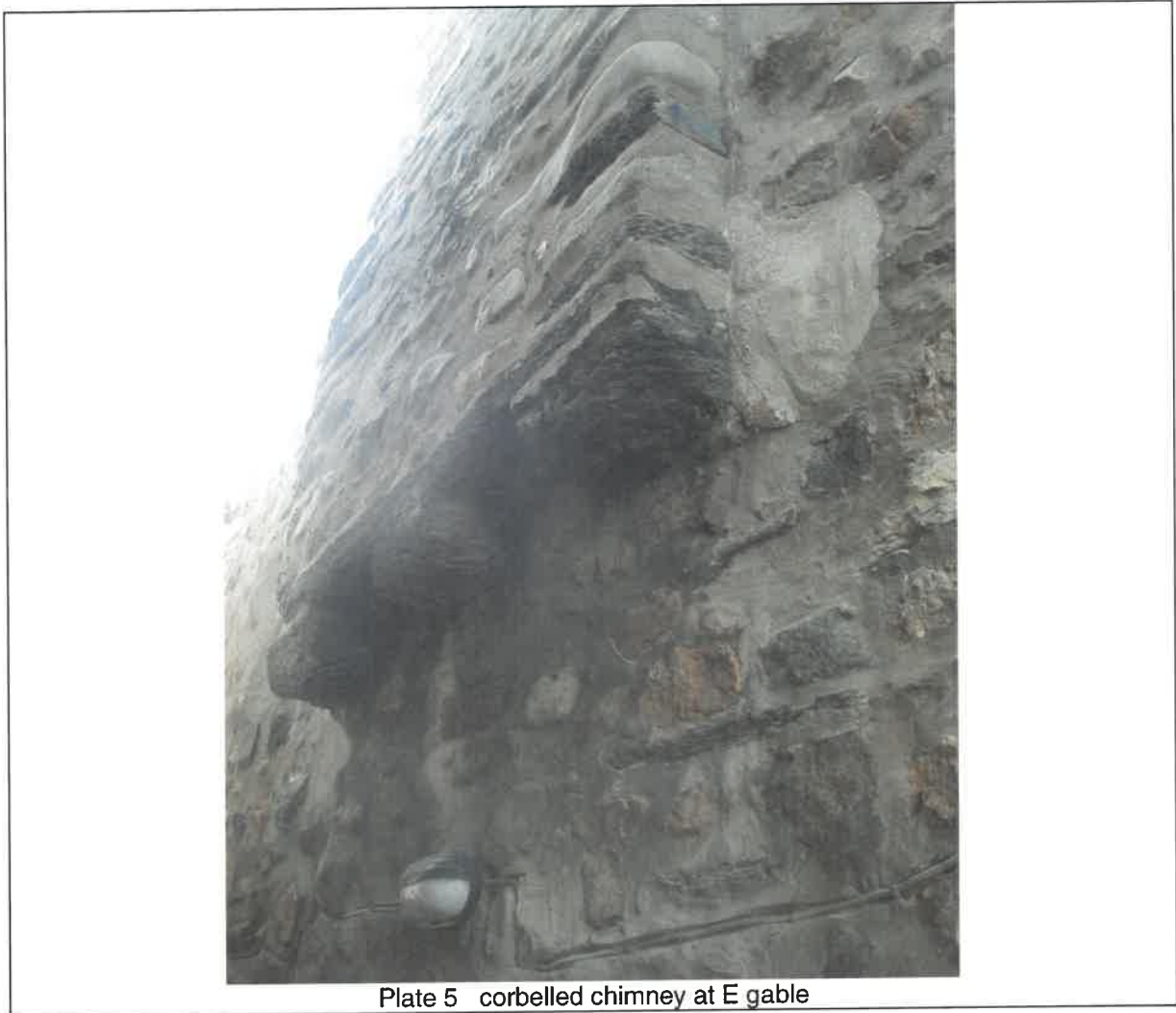


Plate 5 corbelled chimney at E gable