



Darganfod Hen Dai Cymreig Discovering Old Welsh Houses

Reports: Welcome to the many Discovering Old Welsh Houses Reports which are available here on our website. All the reports - House Histories, Building Reports and Tree-ring Dating reports - can be accessed - [here](#)

Discovering Old Welsh Houses studies and celebrates the traditional houses of North Wales and the lives of the people who lived in them.

The copyright of most of these reports belongs to Discovering Old Welsh Houses. Where copyright resides with others, we have made every effort to obtain their permission to reproduce reports on our site. Our policy is to allow free access to our research documents as part of the public benefit we provide as a registered charity. You are welcome to reproduce this material but if you do so, please acknowledge the source

If you find the content useful, please consider becoming a [Member](#) to access the many benefits available.



Please note that these reports are being updated as part of an ongoing programme of revision. Older reports sometimes refer to the old names of the Group. Between 2005 and 2012 also known as The Snowdonia Dendrochronology Project, then the N W Wales Dendrochronology Project and then the Dating Old Welsh Houses Group.

New reports will be added from time to time. Keep an eye on our website for updates.



©Discovering Old Welsh Houses Group

Rhif Elusen Gofrestredig: No: 1131782: Registered charity

www.discoveringoldwelshhouses.co.uk



Oxford Dendrochronology Laboratory
Report 2010/44

THE TREE-RING DATING OF
MAES TYDDYN
Llandrillo, (Edeyrnion, Merioneth)
Denbighshire
(SJ 0302 3722)
1511/12

Houses Description

An intriguing box-framed house. A tentative interpretation is of a hall with outer parlour. The hall has two bays with a lateral fireplace having a prominent diagonally-set stack. An outer parlour is suggested by the remains of a ceiling of flat joists set on corbels over a removed offset fireplace. The present hall floor was inserted in the first half of the seventeenth century and is contemporary with the ovolo-moulded windows.

Reconstructed plan by Smith, Merioneth County History, fig. 10.35b.

Detailed survey (2009) commissioned by NWWDP available in the NMRW.

Richard Suggett, RCAHMW.

The present list includes sampling commissioned by the Royal Commission (RCAHMW), & the North-West Wales Dendrochronology Project (in association with RCAHMW). The North-West Wales Dendrochronology Project (NWWDP) is a community-based project which aims to date historic houses throughout the historic counties of north-west Wales.

A total of 13 buildings were assessed for dendrochronological potential in Gwynedd – Arfon & Dwyfor (excluding Llŷn). Of these, seven were selected for sampling in this study and results were obtained from 5. Sampling in Gwynedd (Merioneth and Caernarfonshire) is often difficult because of fast-grown timber.

Medieval houses dating from before 1400 remain elusive. Hallhouses that have been dated are within the ranges already established for gentry and peasant halls. The apparently coeval fireplace and hall-truss at Tyn-llan suggests that some hallhouses may have had enclosed fireplaces in the early sixteenth century. The first generation of storeyed houses of Snowdonian type are surprisingly early, pre-dating the general insertion of fireplaces in hallhouses from about 1575. Several C15th and C16th town-houses were dated in Beaumaris, Caernarfon and Conway, and are a very useful addition to our knowledge of urban buildings.

Detailed surveys of many of the houses sampled are available in the National Monuments Record of Wales (NMRW), the public archive of the Royal Commission.

Daniel Miles, Michael Worthington, Martin Bridge, Richard Suggett, and Margaret Dunn

Authors: Dr M. C. Bridge FSA and Dr D. W. H. Miles FSA
Oxford Dendrochronology Laboratory
Mill Farm
Mapledurham
Oxfordshire
RG4 7TX

June 2012

The Tree-Ring Dating of MAES TYDDYN Llandrillo, (Edeyrnion, Merioneth) Denbighshire.
(SJ 0302 3722)

BACKGROUND TO DENDROCHRONOLOGY

The basis of dendrochronological dating is that trees of the same species, growing at the same time, in similar habitats, produce similar ring-width patterns. These patterns of varying ring-widths are unique to the period of growth. Each tree naturally has its own pattern superimposed on the basic 'signal', resulting from genetic variations in the response to external stimuli, the changing competitive regime between trees, damage, disease, management etc.

In much of Britain the major influence on the growth of a species like oak is, however, the weather conditions experienced from season to season. By taking several contemporaneous samples from a building or other timber structure, it is often possible to cross-match the ring-width patterns, and by averaging the values for these sequences, maximise the common signal between trees. The resulting 'site Chronology' may then be compared with existing 'master' or 'reference' chronologies.

This process can be done by a trained dendrochronologist using plots of the ring-widths and comparing them visually, which also serves as a check on measuring procedures. It is essentially a statistical process, and therefore requires sufficiently long sequences for one to be confident in the results. There is no defined minimum length of a tree-ring series that can be confidently cross-matched, but as a working hypothesis most dendrochronologists use series longer than at least fifty years.

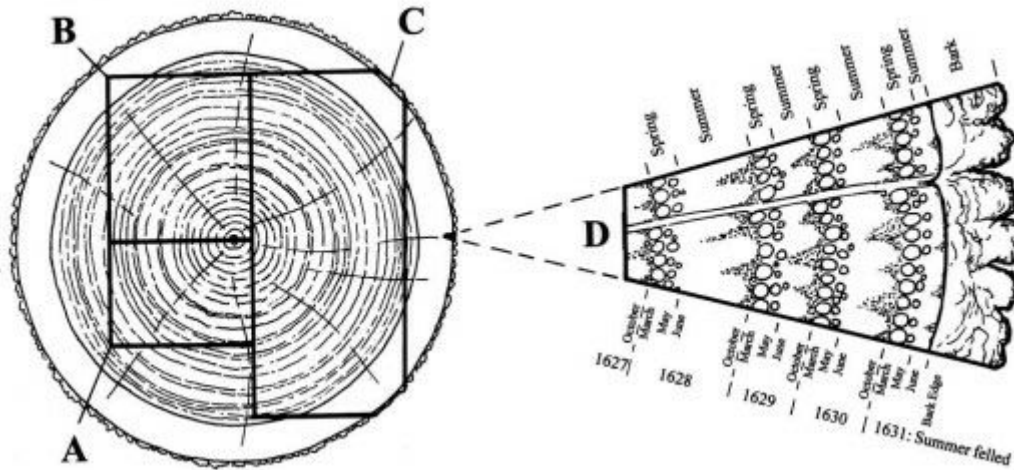
The dendrochronologist also uses objective statistical comparison techniques, these having the same constraints. The statistical comparison is based on programs by Baillie & Pilcher (1973, 1984) and uses the Student's t-test. The t-test compares the actual difference between two means in relation to the variation in the data, and is an established statistical technique for looking at the significance of matching between two data sets that has been adopted by dendrochronologists. The values of 't' which give an acceptable match have been the subject of some debate; originally values above 3.5 being regarded as acceptable (given at least 100 years of overlapping rings) but now 4.0 is often taken as the base value. It is possible for a random set of numbers to give an apparently acceptable statistical match against a single reference curve – although the visual analysis of plots of the two series usually shows the trained eye the reality of this match. When a series of ring-widths gives strong statistical matches in the same position against a number of independent chronologies the series becomes dated with an extremely high level of confidence.

One can develop long reference chronologies by cross-matching the innermost rings of modern timbers with the outermost rings of older timbers successively back in time, adding data from numerous sites. Data now exist covering many thousands of years and it is, in theory, possible to match a sequence of unknown date to this reference material.

It follows from what has been stated above that the chances of matching a single sequence are not as great as for matching a tree-ring series derived from many individuals, since the process of aggregating individual series will remove variation unique to an individual tree, and reinforce the common signal resulting from widespread influences such as the weather. However, a single sequence can be successfully dated, particularly if it has a long ring sequence.

Growth characteristics vary over space and time, trees in south-eastern England generally growing comparatively quickly and with less year-to-year variation than in many other regions (Bridge, 1988). This means that even comparatively large timbers in this region often exhibit few annual rings and are less useful for dating by this technique.

When interpreting the information derived from the dating exercise it is important to take into account such factors as the presence or absence of sapwood on the sample(s), which indicates the outer margins of the tree. Where no sapwood is present it may not be possible to determine how much wood has been removed, and one can therefore only give a date after which the original tree must have been felled. Where the bark is still present on the timber, the year, and even the time of year of felling can be determined. In the case of incomplete sapwood, one can estimate the number of rings likely to have been on the timber by relating it to populations of living and historical timbers to give a statistically valid range of years within which the tree was felled. For this region the estimate used is that 95% of oaks will have a sapwood ring number in the range 11 – 41 (Miles 1997a).



Llandrillo, (Edeyrnion, Merioneth) Denbighshire

(SJ 0302 3722)

(a) Primary phase *Felling date: Winter 1511/12*

(b) Inserted ceiling *Felling date range: 1627-57*

(a) Tiebeam 1508(16); Purlin 1511(24C); Brace (0/1);

(b) Transverse beam 1621(5); Joist (0/1); (c) Replacement wall-plate (0/1). *Site Master 1408-1621 DENBY2 (t = 7.9 TREFECHN; 7.8 NORTH; 7.6 DENBY4; 7.4 BROOKGT)*

Dendrochronology by Oxford Dendrochronology Laboratory

ACKNOWLEDGEMENTS

Michael Worthington undertook the initial sampling and sample measurement during 2009 and dated one of the samples at that time. Margaret Dunn and Richard Suggett both provided assistance on site and provided background information on the building. The owners were very kind in allowing sampling in what is a busy retail environment. We would also thank our fellow dendrochronologists for permission to use their data.

This study was funded by the North-West Wales Dendrochronology Project, co-ordinated by Margaret Dunn, with support by the Royal Commission on Ancient and Historic Monuments of Wales.

REFERENCES

- Arnold, A. J., Howard, R, and Litton, C. D. (2006) *Tree-ring analysis of timbers from the Church of St Martin, East Looe, Cornwall*, **EH Research Dept Rep**, 46/2006.
- Baillie, M.G.L. and Pilcher, J.R. (1973) *A simple cross-dating program for tree-ring research*. **Tree Ring Bulletin**, 33, 7-14.
- Bridge, M. C. (1988) The dendrochronological dating of buildings in southern England, **Medieval Archaeology**, 32, 166-174.
- English Heritage (1998) *Guidelines on producing and interpreting dendrochronological dates*, **English Heritage, London**.
- Miles, D. (1997a) The interpretation, presentation, and use of tree-ring dates, **Vernacular Architecture**, 28, 40-56.
- Miles, D H, (1997b) Working compilation of chronologies from Plas Mawr, Conwy, unpubl computer file PLASMAWR, Oxford Dendrochronology Laboratory
- Miles, D. H. and Worthington, M. J. (2000) Tree-ring dates, **Vernacular Architecture**, 31, 90-113.
- Miles, D. H., Worthington, M. J. and Bridge, M. C. (2004) Tree-ring dates, **Vernacular Architecture**, 35, 95-113.
- Miles, D. H., Worthington, M. J. and Bridge, M. C. (2005) Tree-ring dates, **Vernacular Architecture**, 36, 87-101.
- Miles, D. H., Worthington, M. J. and Bridge, M. C. (2006) Tree-ring dates, **Vernacular Architecture**, 37, 118-132.
- Miles, D. H. and Bridge, M. C. (2010) Tree-ring dates, **Vernacular Architecture**, 41, in prep.
- Tyers, I. (2004) *Dendro for Windows Program Guide 3rd edn*, **ARCUS Report**, 500b.
- Worthington, M. J. and Miles, D. W. H. (2010) The Tree-ring Dating of Seven Buildings from Gwynedd, ODL unpubl report 2010/05